

# COVID-19 Cancer & Haematology Notification Pathway

## NHS Lanarkshire

April 2020

### Purpose of this document

To outline the referral mechanism for Cancer and Haematology services for inpatients who have or are suspected of having malignancy, to the leadership team. This mechanism should also be utilised for patients attending A&E or other services who have a potential incidental malignancy or an existing cancer diagnosed, that are discharged home

### Background

To help ensure a robust process and pathway during the crisis that will offer support and sharing of the workload around contingency planning; the Scottish government has instructed Health Boards to appoint as follows:

**“A consultant must be designated as ‘lead consultant’**, in relation to cancer and Covid-19. This is an essential role during crisis management. It cannot be performed by the consultant ‘on-call’. They must be free of clinical duties and the role involves co-ordination of the whole service from emergency department (ED) through to liaison with other specialties and managers.

NHS Lanarkshire will deliver on this supported by the Cancer and Haematology CNS’s on the 3 acute sites who will act as the Cancer Covid-19 Team to assist in the facilitation and management of cancer patients, in relation to Covid -19.

The team will be responsible for linking with relevant Clinical, Oncology and Haematology teams in addition to reporting to the Cancer Leadership Team during the Covid-19 pandemic and beyond (Appendix 1).

### Process (Appendix 2)

1. Patients with a suspected or confirmed malignancy, must be notified to the Cancer Covid-19 team, the same day that they are identified.
2. The responsible team will notify the Cancer Covid-19 number by calling the Hub telephone number 01698 753429 or emailing the designated email.

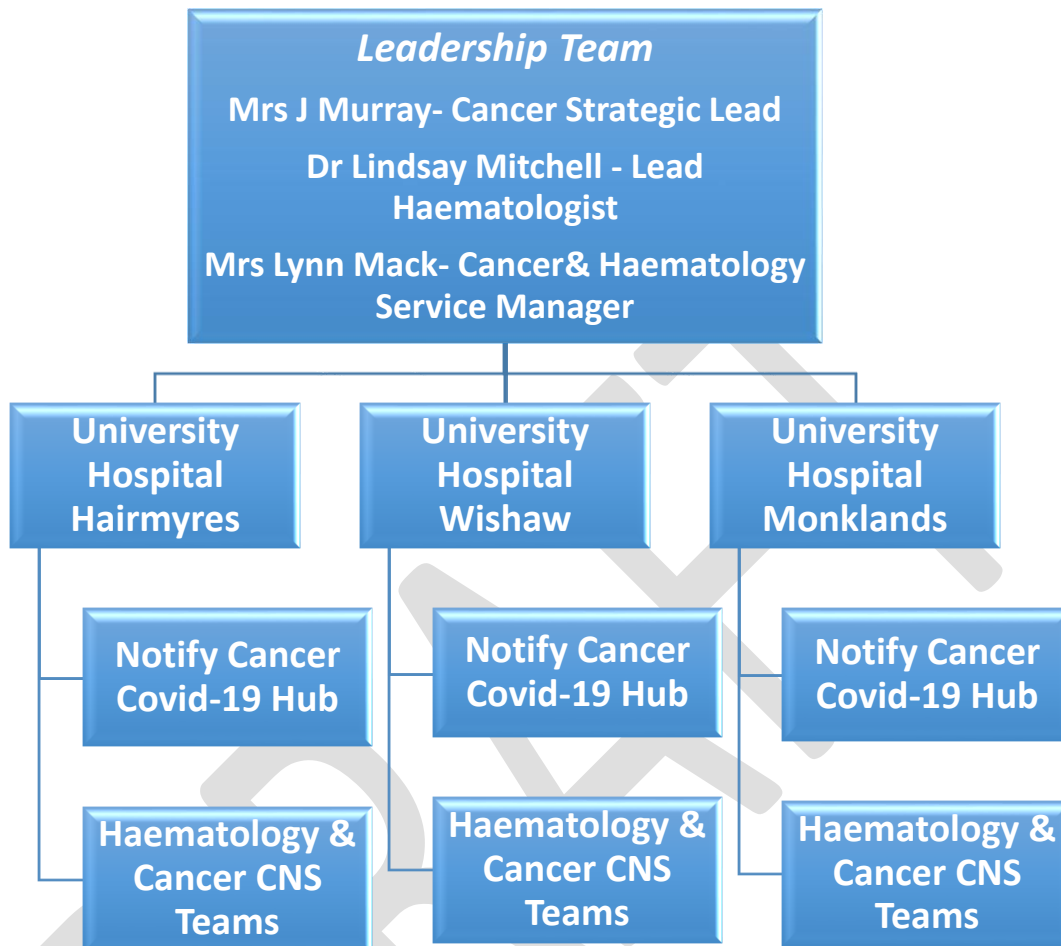
3. The individual manning the Hub will take the details and notify the Cancer Covid-19 Team for that site to update.
4. The Cancer Covid-19 team will make contact the relevant area to further assess and discuss the case with the patients relevant Oncologist or Speciality Clinical Team the patient is under. They will check that the TELP assessment has been applied to each patient.
5. Patients highlighted to the Cancer Covid-19 team remain the responsibility of the referring team.
6. Patients who are discharged for further outpatient follow up should have the following aspects confirmed or addressed upon discharge:
  - I. Adequate home support with liaison and referral to Macmillan services and community palliative care where appropriate. This is usually arranged by nursing staff at the point of discharge or as soon as possible in office hours if a patient is discharged at a weekend or evening.
  - II. Adequate symptom control (including pain control) with liaison with inpatient palliative care prior to discharge where appropriate.
  - III. Telephone notification to GP practice of the discharge, suspected diagnosis and management plan.
7. Patients who are not discharged and require management for probable malignancy should be transferred to the appropriate speciality as soon as this is possible, if feasible depending on COVID-19 status.
8. The Cancer Covid-19 team will support liaison with relevant specialities/Cancer/Haematology CNS to manage patient care expediently.
9. The Cancer Covid-19 team will keep a detailed record on the hospital site of all Cancer patients who attend emergency care and are either admitted or discharged for on-going care.
10. The Cancer Covid-19 team will identify any potential patient for inclusion in the UK coronavirus cancer monitoring scheme and inform the relevant oncologist/haematologist.
11. Where this is not possible an email referral outlining the presentation, comorbidities, performance status and the results of imaging should be sent to the Cancer COVID-19 referral email address ([cancer.referral@lanarkshire.scot.nhs.uk](mailto:cancer.referral@lanarkshire.scot.nhs.uk)) with the following subject heading “ **\*\*URGENT CANCER NOTIFICATION: FAO Cancer Covid-19 Team notification to specialist team\*\*** ”

12. Cross reference will be made with:

- A&E activity from the previous 24 hours
- Covid-19 confirmed and suspected daily site records
- Cancer Waiting Times database

DRAFT

Appendix 1: The Cancer Covid-19 Team



## Appendix 2: The Cancer Covid-19 Notification Pathway

