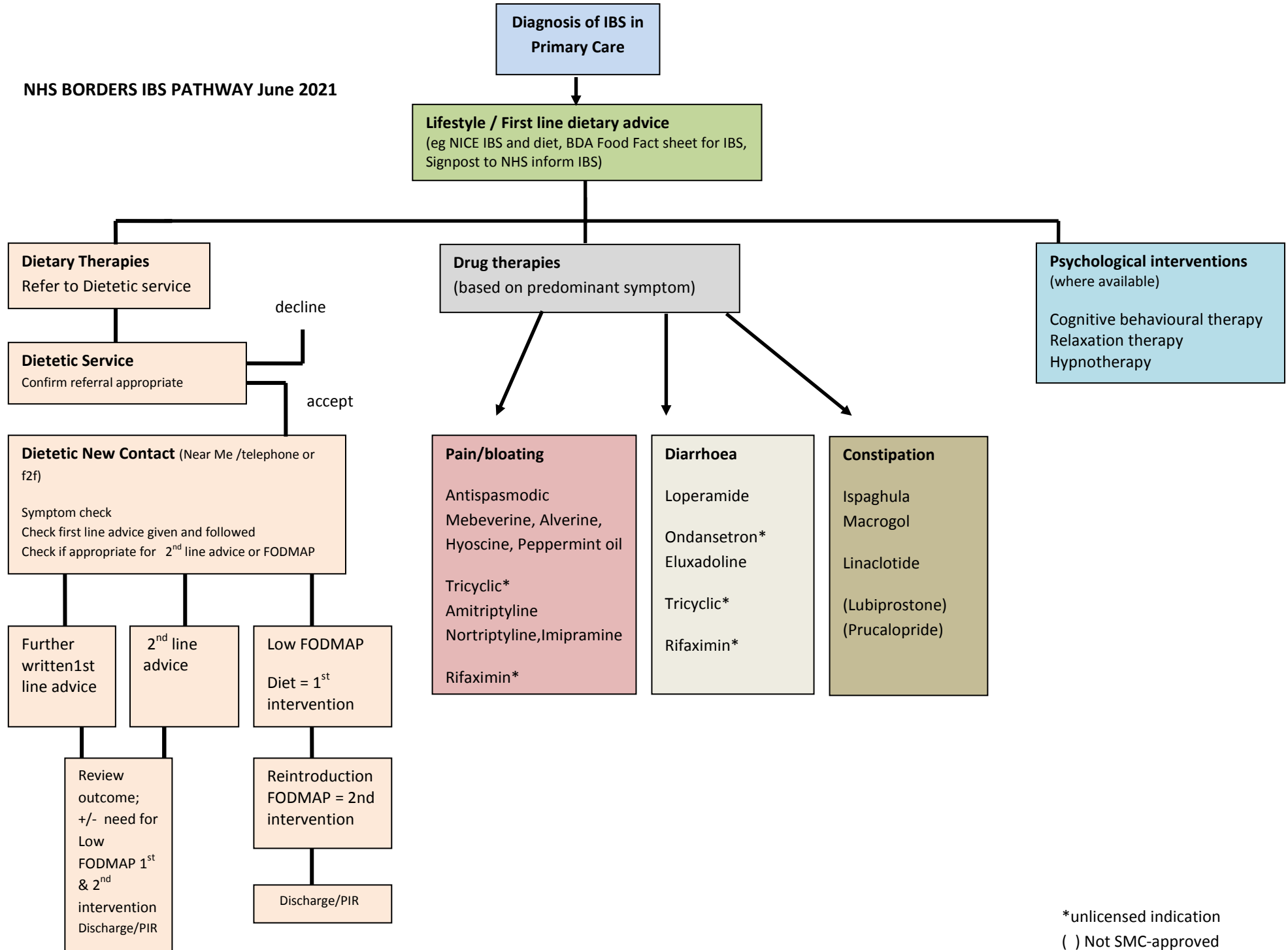
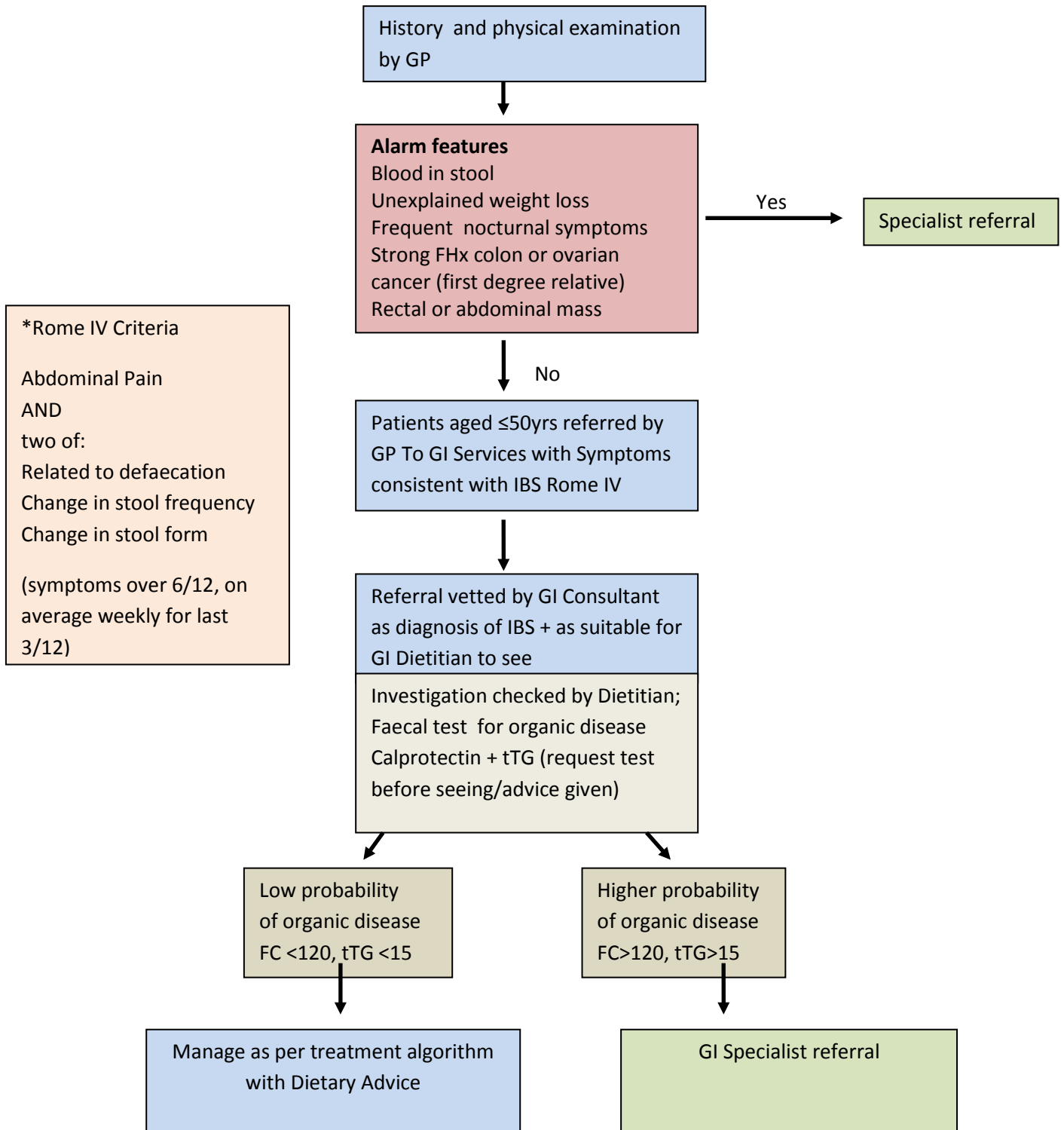


NHS BORDERS IBS PATHWAY June 2021



*unlicensed indication
() Not SMC-approved

**NHS Borders IBS Pathway based on NHS Scotland's Modern Outpatient Programme's
Gastroenterology Collaborative National Clinical IBS Pathway**



NOTES.

1. Family history of colon cancer is especially relevant if a first degree relative (FDR) <50yrs is affected, or if there are 2 FDRs affected at an older age.
2. Both faecal calprotectin and faecal immunochemical tests for human haemoglobin (FIT) are useful in identifying patients with a higher probability of organic colonic disease. Availability, assays and protocols for the use of these tests vary, and local guidance on their usage and interpretation should be followed.
3. In patients with persistent watery diarrhoea not responding to Rx, consider the possibility of microscopic colitis and possible need for colonic biopsies.