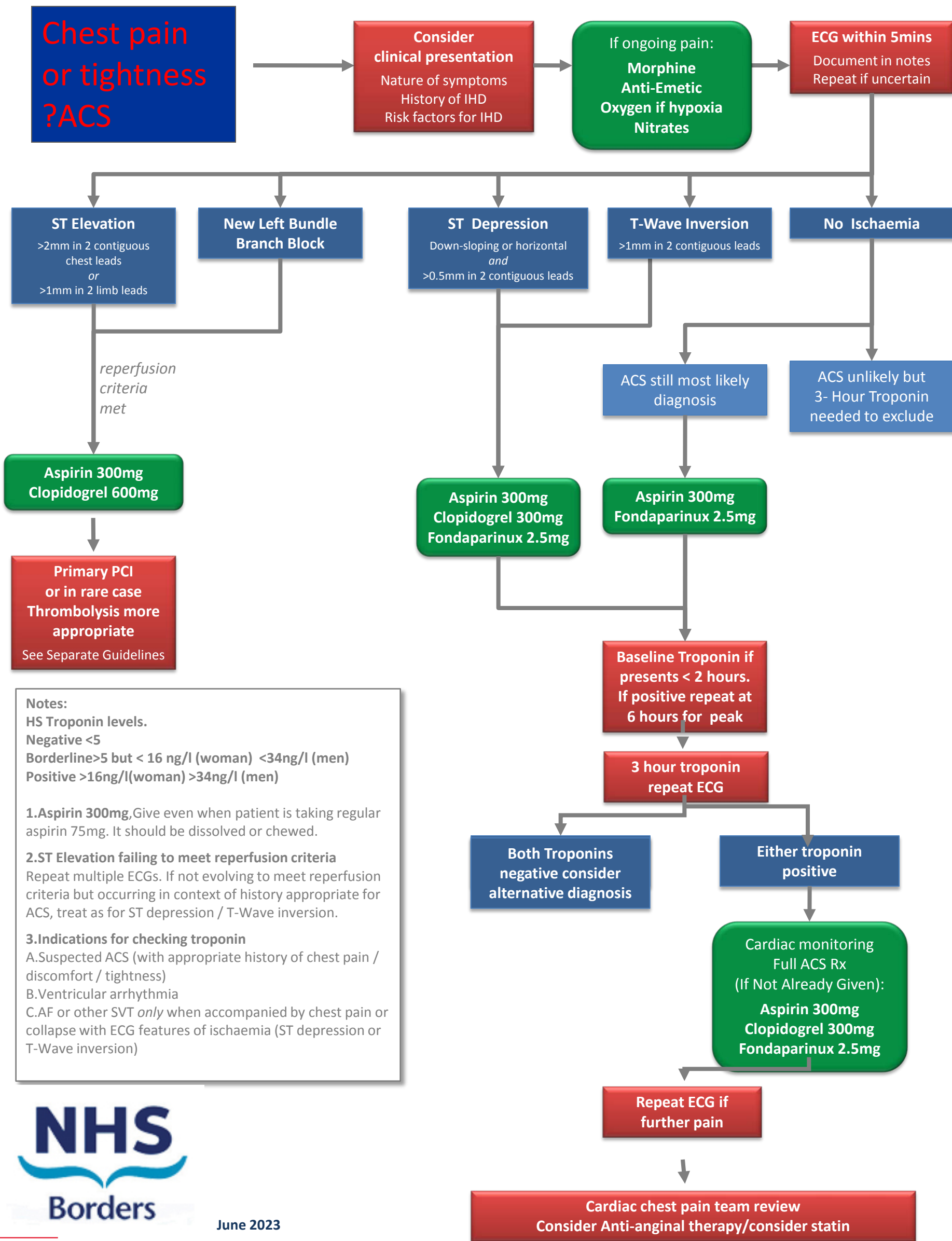


Acute Coronary Syndrome



Notes:
 HS Troponin levels.
 Negative <5
 Borderline >5 but < 16 ng/l (woman) <34ng/l (men)
 Positive >16ng/l(woman) >34ng/l (men)

- 1. Aspirin 300mg.** Give even when patient is taking regular aspirin 75mg. It should be dissolved or chewed.
- 2. ST Elevation failing to meet reperfusion criteria**
Repeat multiple ECGs. If not evolving to meet reperfusion criteria but occurring in context of history appropriate for ACS, treat as for ST depression / T-Wave inversion.
- 3. Indications for checking troponin**
 A. Suspected ACS (with appropriate history of chest pain / discomfort / tightness)
 B. Ventricular arrhythmia
 C. AF or other SVT *only* when accompanied by chest pain or collapse with ECG features of ischaemia (ST depression or T-Wave inversion)

