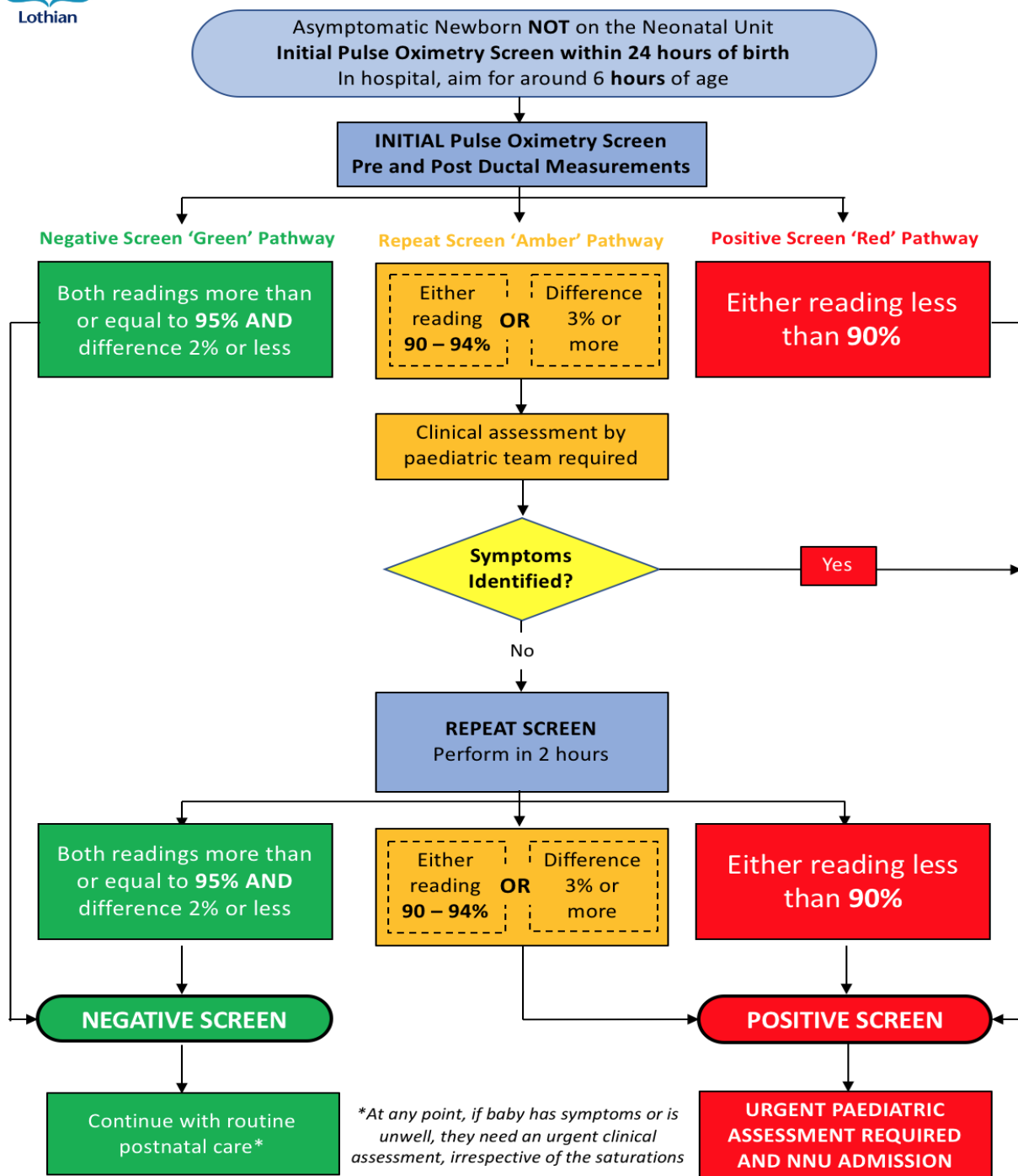


## PATHWAY FOR POS

- POS involves measurement of pre and post ductal saturations with a Masimo Rad G handheld pulse oximeter.
- Scan this QR code to take you to a short video on how to use the Masimo Rad G pulse oximeter.
- The sensor is REUSABLE. Please do not discard.
- The blue foam wrap is single patient use.



## NHS Lothian Newborn Pulse Oximetry Screening Pathway



- Based on the pre and post-ductal values and the difference between the 2 measurements, the baby is assigned to a colour pathway. See flowchart above.
  - Green (= negative screen). Most babies will fall into this category.
  - Amber (needs a clinical review and, if well, a repeat POS in 2 hours)
  - Red (= positive screen, needs urgent clinical review and NNU admission)
- The dot chart below can help allocate a baby to the correct pathway based on their saturations



# Newborn Pulse Oximetry Screening

